



## HDTV Production Studio

New Build of a HDTV Studio Complex

**Project Description:** On behalf of German public broadcaster NDR as prime contractor we carried out the new build of a complete studio complex in Hamburg-Lokstedt. The major project covered – besides technical conceptioning, planning and manufacturing of customised studio furniture – the installation and commissioning of a complete HDTV capable studio infrastructure using the 1080i/25p standard.



Picture direction



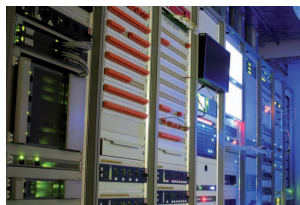
5.1 audio editing



Console vision mixer



Camera robotic



Equipment room



Evertz EQX video router system

**Wilhelm Vinke, System Architect, NDR:** *“With the new build of our auxiliary studio in Hamburg-Lokstedt we are now able to produce TV programmes in HDTV more independently from our main studios. The integration of state-of-the-art technology enables our teams to flexibly react on changing production situations. By implementing standardised production workflows the new studio seamlessly fits into our growing HDTV infrastructure.”*

### Technical Specifications (Excerpt)

- + Sony MVS-8000G, HD vision mixer
- + Stagetec Crescendo audio mixer
- + Stagetec Nexus Star audio router
- + Evertz multiviewer system and router
- + Shotoku camera robotic system
- + VSM-Studio controller and various L-S-B panels
- + Clearcom intercom system
- + About 100 TFT monitors
- + Various LYNX glue equipment
- + Tektronix measuring instruments and modular equipment
- + A!Tec EventDriver
- + Alpermann+Velte timer system
- + Guntermann & Drunck KVM equipment
- + Sennheiser microphone systems
- + Design and manufacturing of customised studio furniture and racks