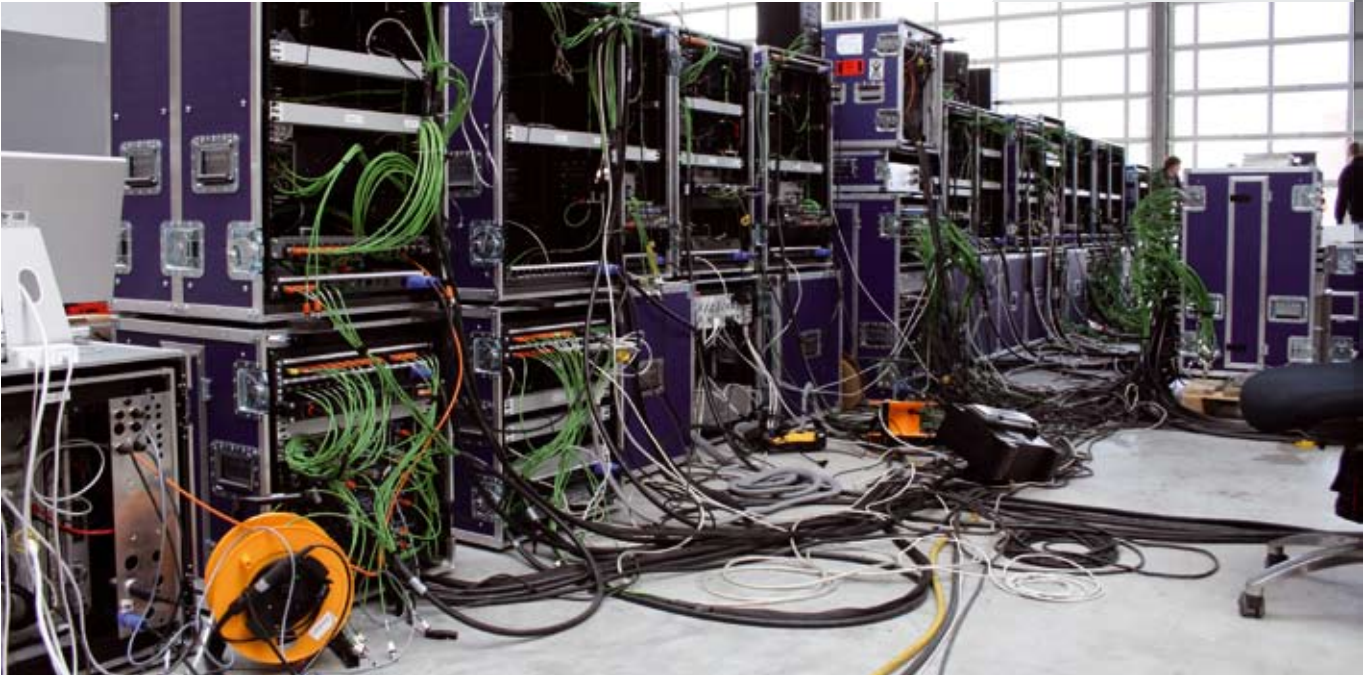


# Formula 1 Modular mobile production equipment: quick to install and immediately ready for use



For the live broadcast of the 2008 Formula 1 season, Wellen+Nöthen has provided Italian station Sky Italia with a customized mobile production system. Just like the Formula 1 race cars, this system is all about speed and superlative reliability. The complex HD production unit was integrated into a customized flight case system, whose modular container structure facilitates



rapid and flexible start-up. Alternatively, the entire unit can also be integrated with minimal effort into a special truck trailer: using two pre-configured wiring harnesses, together with pre-programmed setups, two engineers can have the entire system up and running in just a few hours, just like with the container solution. The production unit is also equipped with a 128 x 128 cross rail from GVG/THOMSON and a signal processing system from LYNX. Monitoring is via Evertz HD Multiviewers with 42" full HD panels from Barco, together with 17" multi-format displays from Panasonic. The digital DM2000 audio console from Yamaha serves not just as a production console, but also, in conjunction with the Riedel intercom system, as a format changer, signal processor and cross rail. RTL, too, once again turned in 2008 to mobile production equipment from Wellen+Nöthen: its modular construction meant that the editing unit used last year could be flexibly adapted to the personal production requirements for the current season.

## Technical Specifications:

- Modular system flight cases
- GVG/THOMSON: HD router 128 x 128
- Evertz: HD VIP4+VIP12 Multiviewer systems
- Barco: full HD 42" LCD panels
- Panasonic: BT-LH-1700WE, multi-format 17" LCD panels
- Alpermann+Velte: TC generator system
- Tektronix: rasterizer measurement
- GVG/THOMSON: Kayak HD 2ME incl. RAMRecorder + DME
- EVS: XT(2) HD, 6-channel
- Sony: DVW-M2000, HDW-M2000
- Lynx: modular processing
- Yamaha: DM2000 digital mixing console
- Riedel: digital intercom matrix

More cases? Visit us at [www.wellen-noethen.de](http://www.wellen-noethen.de) or mail [info@wellen-noethen.de](mailto:info@wellen-noethen.de)

**Wellen+Nöthen**  
Köln Berlin

